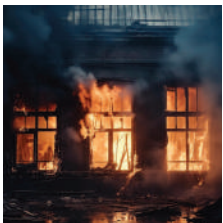


# SAFETY & SECURITY FILM

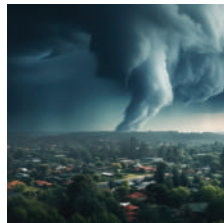
## 3M™ ULTRA S600

3M™ Safety film is made from high grade polyester. With the best and patented technology from 3M, which provides features that support safety through safety testing at impact strength from 100-600 foot-pounds according to international standards ANSI Z97.1 (American National Standards Institute) and CPSC: Cfr16, Part 1201 (the Consumer Products Safety Commission). Therefore, glass equipped with 3M™ safety film can effectively absorb shock and prevent danger from shattered glass fragments. It will help to hold the broken pieces of glass, so they don't fall and can be blown out of the window.



**Bomb Blast and Explosion Protection**

- Protects from flying glass fragments.
- due to the compression of the explosion This is one of the causes of injury or death from explosions.



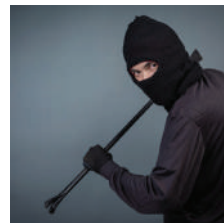
**Windstorm and Debris Protection**

- Reduces damage from water and landslides from storms.
- Help protect residents and various properties so that they can continue.



**Safety Glazing and Human Impact**

- Improve the safety efficiency of the installed glass.
- Helps protect residents from broken glass that may be caused by actions by individuals.



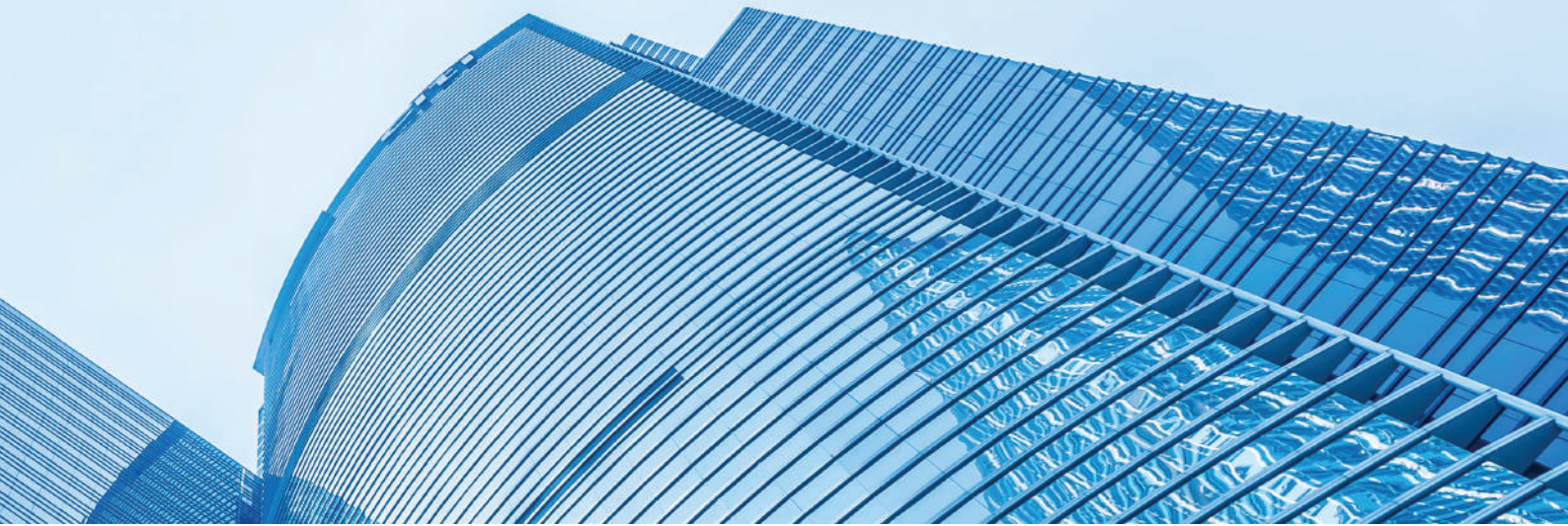
**Break and Entry**

- Helps prevent and delay intrusion by people with bad intentions.
- Help protect residents property from thieves.



**Seismic and Spontaneous Glass Breakage**

- Help to hold the glass when it cracks or falls from the window.
- Help to prevent and reduce injury to persons or damage that may occurred.



## DESCRIPTION

3M™ Safety Film Ultra S600 is designed to use on the inside surface of windows. This film has a unique multilayer construction based on nanotechnologies. Ultra Safety Films are 40 times more resistant against tearing than ordinary safety films of the same thickness. Therefore the resistance of glass / film to penetration and failure is significantly increased.

3M™ Safety Films provide an effective protection from injuries or damaged to items caused the fragments of broken glass. In case of glass breakage the fragments are hold due to the system of the adhesive.

## FEATURES

(on 6 mm clear glass)

Total solar energy reduction : 21 %

G-value : 0.79

Reduction of Glare : 2 %

Reduction of UV rays : 98 %

## STRUCTURE OF THE FILM

Thickness : 0,150 mm / 150 μ

Colour : Clear

Material of the film : Polyester

Adhesive : Special Acrylic

Top coating : Scratch resistant hard coat

## INSTALLATION

3M Window films are installed using water and a soap solution.

Full adhesion is reached after approximately 20 days at 18°C (in dry conditions).

## CLEANING

3M Window films may be cleaned 30 days after installation using ordinary window cleaning agents and avoiding the use of abrasive particles. Do not use rough sponges, cloths or brushes. Synthetic sponges, soft wipes or rubber squeegee cleaners are recommended. Do not clean 3M films dry.

## SPECIFICATION

GLASS TYPE	FILM TYPE	SC	VLR%	VLT %	EMISSIVITY	U-VALUE	G-VALU	TSER
SINGLE PANE								
Clear	No Film	0.94	8%	88%	0.84	1.06	0.82	18%
	Ultra S600	0.90	10%	84%	0.89	1.10	0.79	21%
Tinted	No Film	0.69	5%	50%	0.84	1.06	0.60	40%
	Ultra S600	0.68	6%	47%	0.89	1.10	0.60	40%
DOUPLE PANE								
Clear	No Film	0.81	14%	80%	0.84	0.50	0.70	30%
	Ultra S600	0.79	18%	73%	0.89	0.50	0.69	31%
Tinted	No Film	0.55	8%	45%	0.84	0.50	0.48	52%
	Ultra S600	0.55	8%	41%	0.89	0.50	0.48	52%